

Hampshire Water Transfer and Water Recycling Project Environmental Statement - Figure 13.18 Zone of Theoretical Visibility - construction bare earth – whole Proposed Development

VOLUME NUMBER: 6

PLANNING INSPECTORATE SCHEME NUMBER: WA010002

APPLICATION DOCUMENT REFERENCE: 6.3

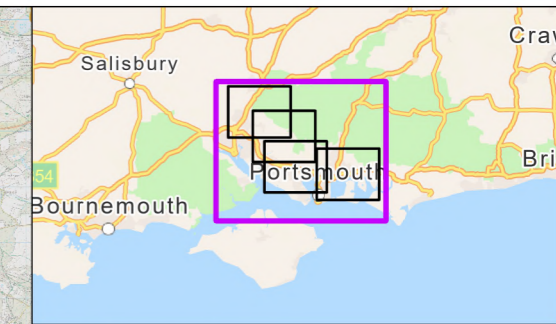
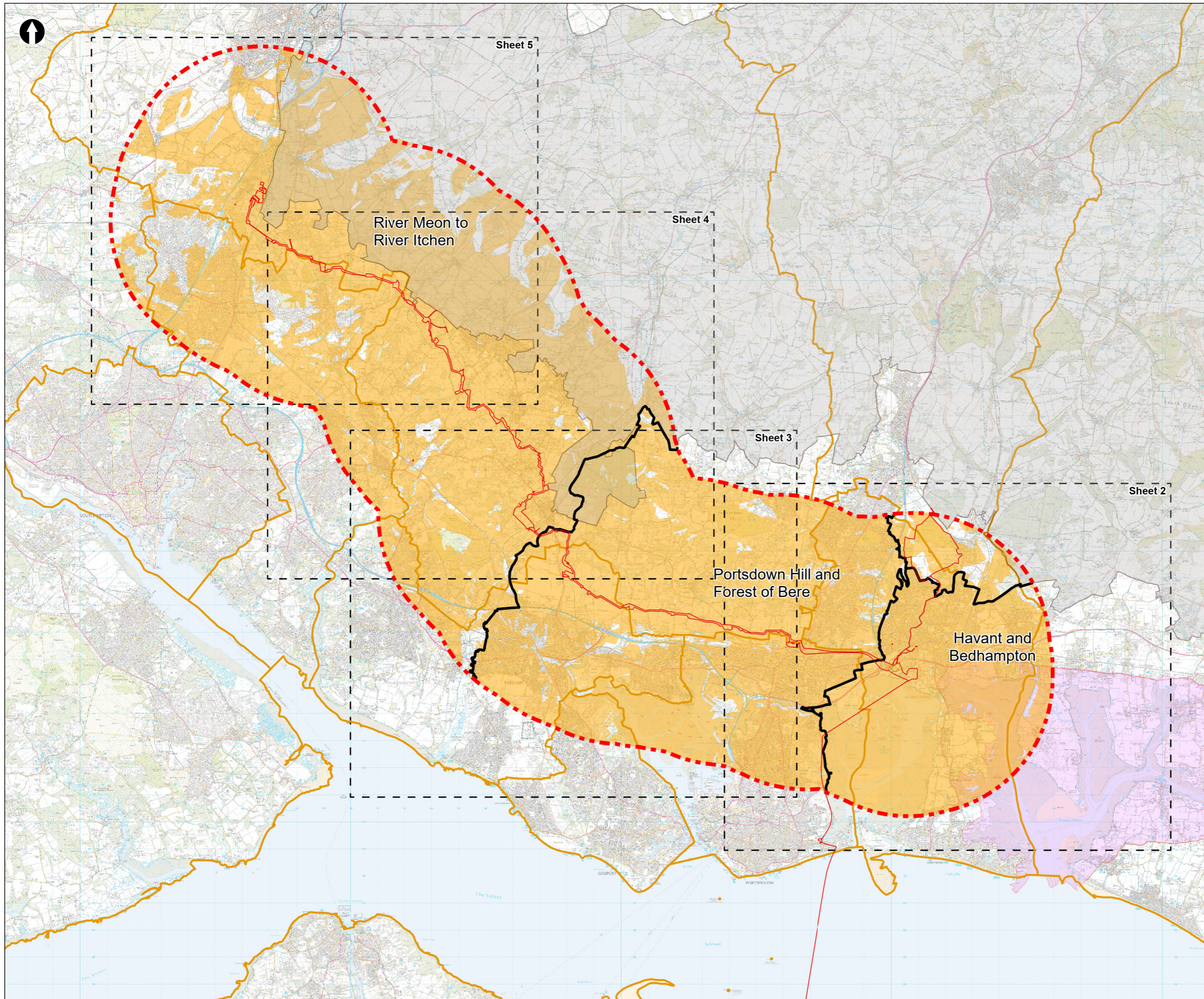
APFP REGULATION: 5(2)(a)

May 2026

Version 0



from
**Southern
Water** 



- Order Limits
- Visual Study Area (5km)
- Principal sections within the study area
- Sheet extent boxes 1:50k
- Local planning authorities
- Chichester Harbour National Landscape
- South Downs National Park
- Water Recycling Plant Site
- Zone of Theoretical Visibility: Construction bare earth

ZTV = Zone of Theoretical Visibility.
DTM = Digital Terrain Model.

ZTV produced with Lidar DTM.
ZTV shows visibility, without screening, of construction works above ground only.
Sectional Site Compounds: 20m height.
Trenchless Crossing Compounds: 40m height.
Tunnel Compounds: 40m height.
Open cut sections of DOL: 10m height.

Coordinate system: British National Grid; Datum: OSGB 1936
Data sources: © Crown copyright and database rights 2026 Ordnance Survey 0100031673. Sources: Esri, TomTom, Garmin, FAO, NOAA, USGS, © OpenStreetMap contributors, and the GIS User Community © Environment Agency copyright and/or database right 2026. All rights reserved.

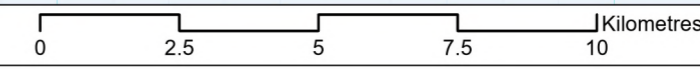
PROJECT TITLE
Hampshire Water Transfer and Water Recycling Project

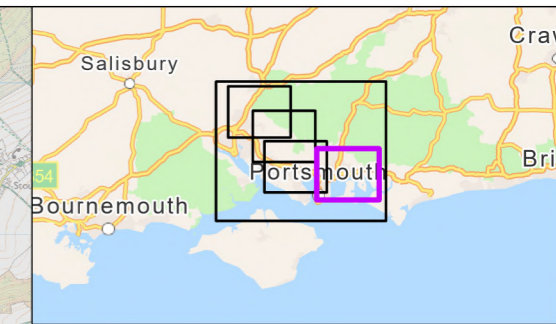
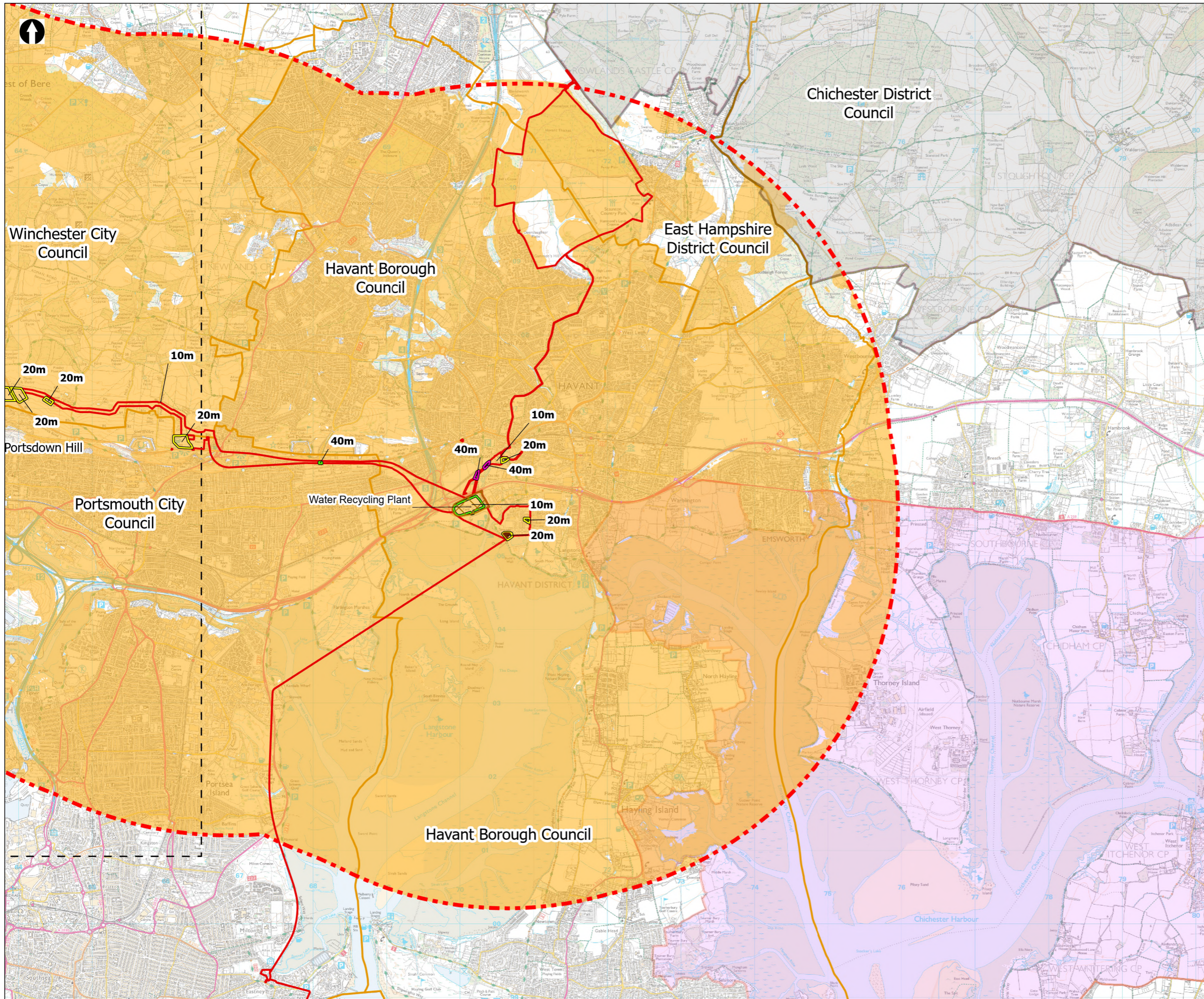


Figure 13.18
Zone of Theoretical Visibility (construction, bare earth – whole Proposed Development)
Sheet 1 of 5

Drawn DL	GIS Checked MW	Checked MP	Approved AK
Scale at A3 1:136,000	Status Final	Revision 05	Security STD

Drawing Number
PC5223-RHD-ES-ZZ-D-Z-0143





- Order Limits
- Visual Study Area (5km)
- Sheet extent boxes 1:50k
- Local planning authorities
- Chichester Harbour National Landscape
- South Downs National Park
- Water Recycling Plant Site
- Limits of Deviation for Budds Farm Pumping Station
- Trenchless Crossing Compound
- Tunnel Compound
- Sectional Compound
- Zone of Theoretical Visibility: Construction bare earth

ZTV = Zone of Theoretical Visibility.
DTM = Digital Terrain Model.

ZTV produced with Lidar DTM.
ZTV shows visibility, without screening, of construction works above ground only.
Sectional Site Compounds: 20m height.
Trenchless Crossing Compounds: 40m height.
Tunnel Compounds: 40m height.
Open cut sections of DOL: 10m height.

Coordinate system: British National Grid; Datum: OSGB 1936
Data sources: © Crown copyright and database rights 2026 Ordnance Survey 0100031673. Sources: Esri, TomTom, Garmin, FAO, NOAA, USGS, © OpenStreetMap contributors, and the GIS User Community © Environment Agency copyright and/or database right 2026. All rights reserved.

PROJECT TITLE
Hampshire Water Transfer and Water Recycling Project

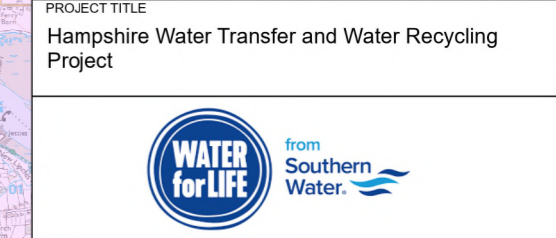
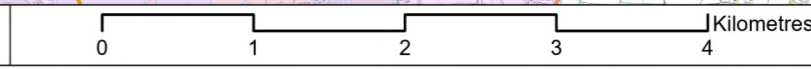
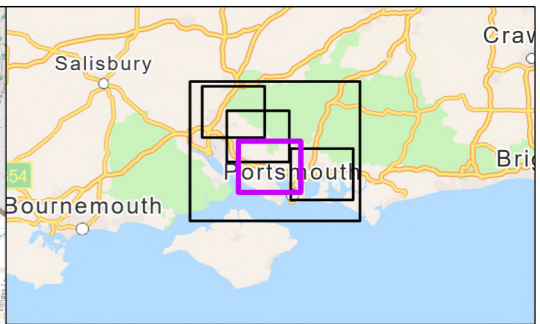
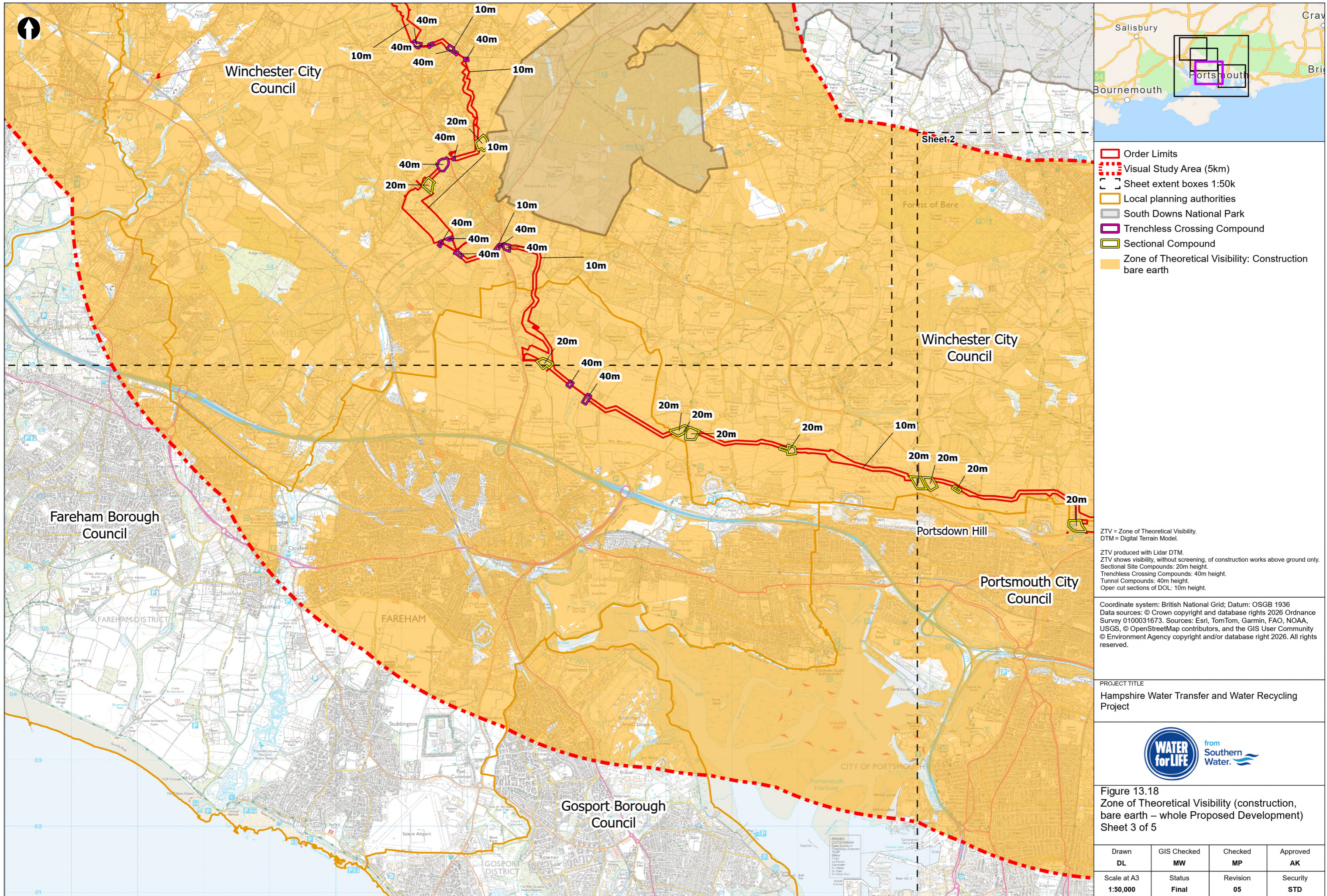


Figure 13.18
Zone of Theoretical Visibility (construction, bare earth – whole Proposed Development)
Sheet 2 of 5

Drawn DL	GIS Checked MW	Checked MP	Approved AK
Scale at A3 1:50,000	Status Final	Revision 05	Security STD

Drawing Number
PC5223-RHD-ES-ZZ-D-Z-0143





- Order Limits
- - - Visual Study Area (5km)
- Sheet extent boxes 1:50k
- Local planning authorities
- South Downs National Park
- Trenchless Crossing Compound
- Sectional Compound
- Zone of Theoretical Visibility: Construction bare earth

ZTV = Zone of Theoretical Visibility.
DTM = Digital Terrain Model.

ZTV produced with Lidar DTM.
ZTV shows visibility, without screening, of construction works above ground only.
Sectional Site Compounds: 20m height.
Trenchless Crossing Compounds: 40m height.
Tunnel Compounds: 40m height.
Open cut sections of DOL: 10m height.

Coordinate system: British National Grid; Datum: OSGB 1936
Data sources: © Crown copyright and database rights 2026 Ordnance Survey 0100031673. Sources: Esri, TomTom, Garmin, FAO, NOAA, USGS, © OpenStreetMap contributors, and the GIS User Community © Environment Agency copyright and/or database right 2026. All rights reserved.

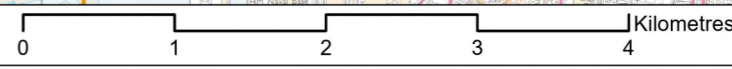
PROJECT TITLE
Hampshire Water Transfer and Water Recycling Project

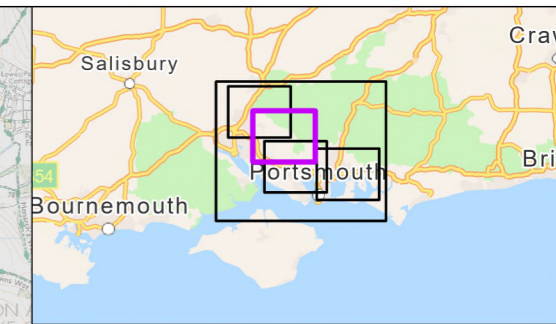
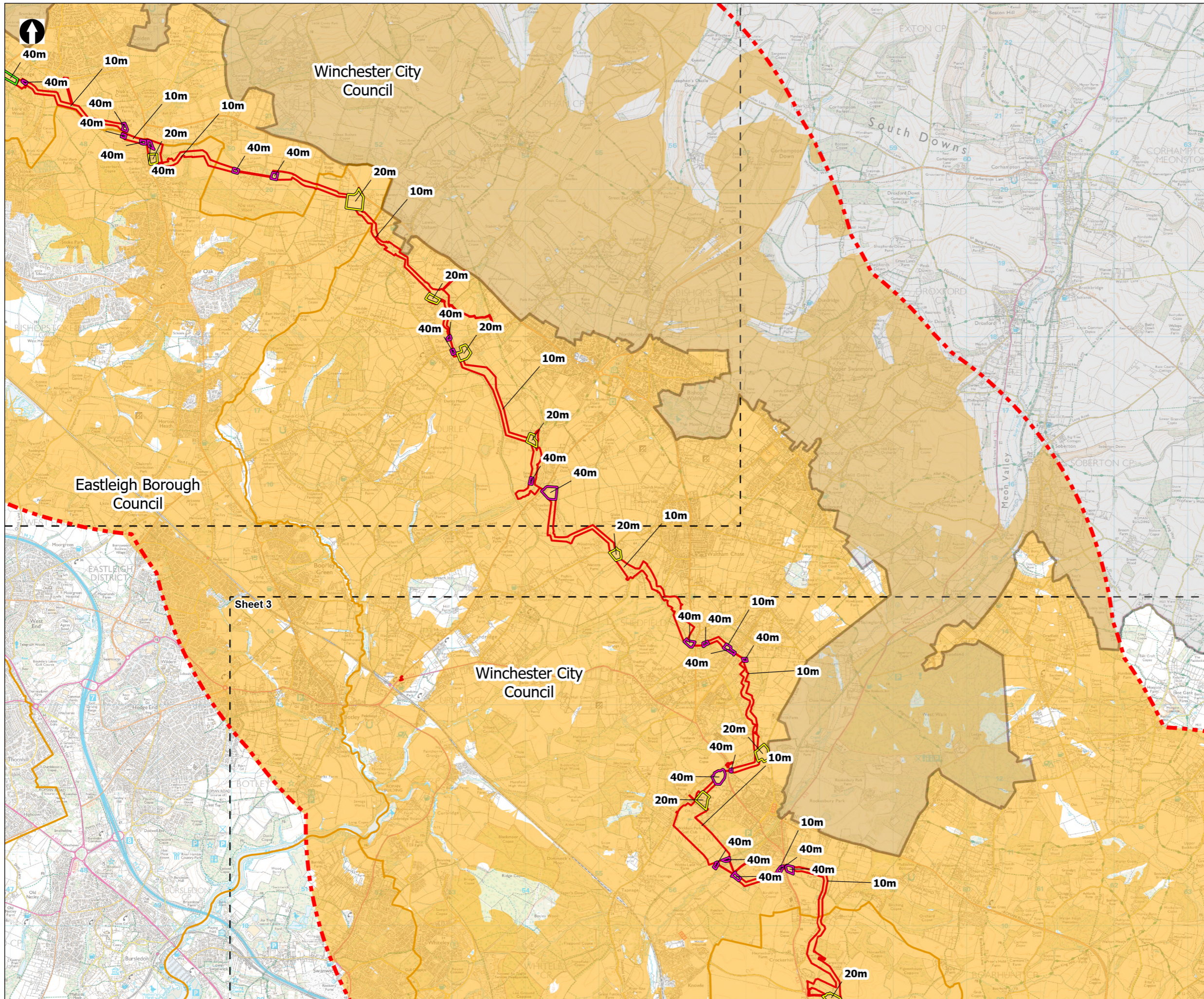


Figure 13.18
Zone of Theoretical Visibility (construction, bare earth – whole Proposed Development)
Sheet 3 of 5

Drawn DL	GIS Checked MW	Checked MP	Approved AK
Scale at A3 1:50,000	Status Final	Revision 05	Security STD

Drawing Number
PC5223-RHD-ES-ZZ-D-Z-0143





- Order Limits
- Visual Study Area (5km)
- Sheet extent boxes 1:50k
- Local planning authorities
- South Downs National Park
- Trenchless Crossing Compound
- Tunnel Compound
- Sectional Compound
- Zone of Theoretical Visibility: Construction bare earth

ZTV = Zone of Theoretical Visibility.
DTM = Digital Terrain Model.

ZTV produced with Lidar DTM.
ZTV shows visibility, without screening, of construction works above ground only.
Sectional Site Compounds: 20m height.
Trenchless Crossing Compounds: 40m height.
Tunnel Compounds: 40m height.
Open cut sections of DOL: 10m height.

Coordinate system: British National Grid; Datum: OSGB 1936
Data sources: © Crown copyright and database rights 2026 Ordnance Survey 0100031673. Sources: Esri, TomTom, Garmin, FAO, NOAA, USGS, © OpenStreetMap contributors, and the GIS User Community © Environment Agency copyright and/or database right 2026. All rights reserved.

PROJECT TITLE
Hampshire Water Transfer and Water Recycling Project

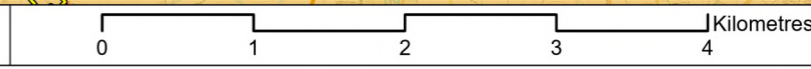


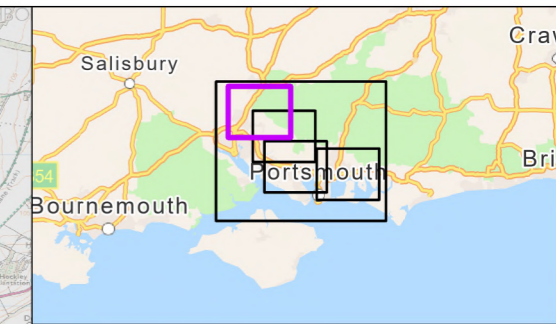
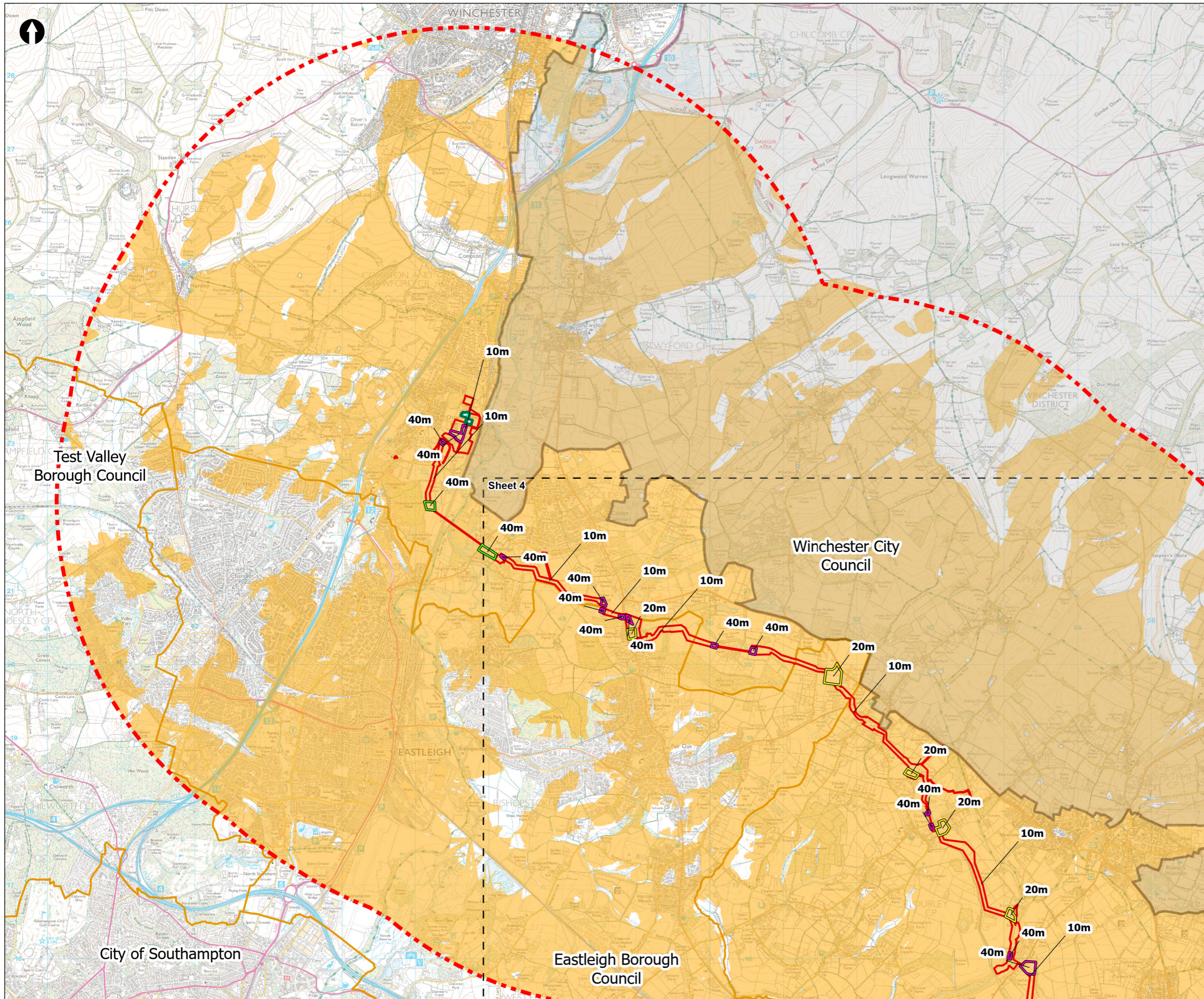
Figure 13.18
Zone of Theoretical Visibility (construction, bare earth – whole Proposed Development)
Sheet 4 of 5

Drawn DL	GIS Checked MW	Checked MP	Approved AK
Scale at A3 1:50,000	Status Final	Revision 05	Security STD

Drawing Number
PC5223-RHD-ES-ZZ-D-Z-0143

© Southern Water 2026
This document is issued for the party which commissioned it and for specific purposes connected with the captioned project only. It should not be relied upon by any other party or used for any other purpose.
We accept no responsibility for the consequences of this document being relied upon by any other party, or being used for any other purpose, or containing any error or omission which is due to an error or omission in data supplied to us by other parties.





- Order Limits
- Visual Study Area (5km)
- Sheet extent boxes 1:50k
- Local planning authorities
- South Downs National Park
- Limits of Deviation for Otterbourne INNS Treatment Plant
- Trenchless Crossing Compound
- Tunnel Compound
- Sectional Compound
- Zone of Theoretical Visibility: Construction bare earth

ZTV = Zone of Theoretical Visibility.
DTM = Digital Terrain Model.

ZTV produced with Lidar DTM.
ZTV shows visibility, without screening, of construction works above ground only.
Sectional Site Compounds: 20m height.
Trenchless Crossing Compounds: 40m height.
Tunnel Compounds: 40m height.
Open cut sections of DOL: 10m height.

Coordinate system: British National Grid; Datum: OSGB 1936
Data sources: © Crown copyright and database rights 2026 Ordnance Survey 0100031673. Sources: Esri, TomTom, Garmin, FAO, NOAA, USGS, © OpenStreetMap contributors, and the GIS User Community © Environment Agency copyright and/or database right 2026. All rights reserved.

PROJECT TITLE
Hampshire Water Transfer and Water Recycling Project



Figure 13.18
Zone of Theoretical Visibility (construction, bare earth – whole Proposed Development)
Sheet 5 of 5

Drawn DL	GIS Checked MW	Checked MP	Approved AK
Scale at A3 1:50,000	Status Final	Revision 05	Security STD

Drawing Number
PC5223-RHD-ES-ZZ-D-Z-0143

